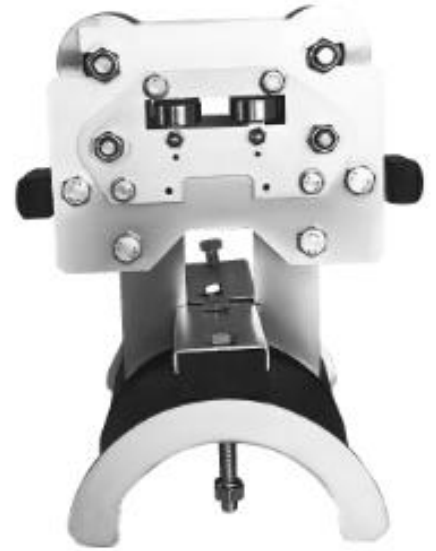
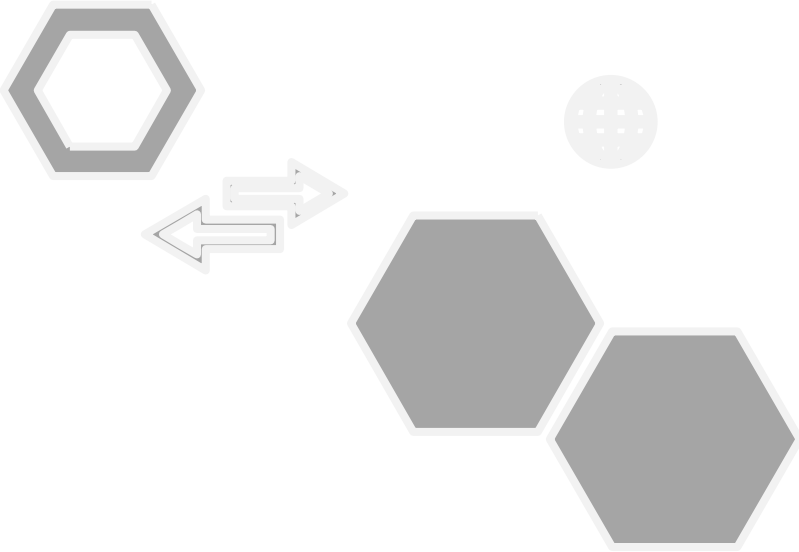


## CT10 CABLE TROLLEY



## Festoon Systems For I-Beams

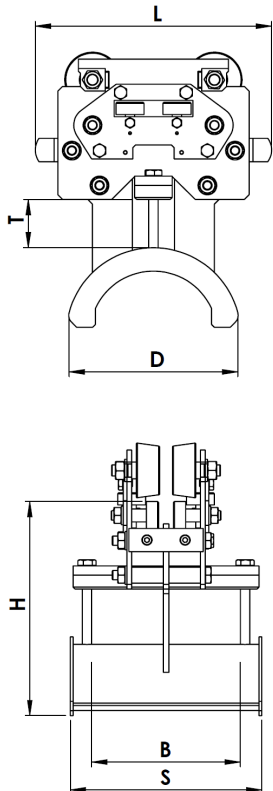
## CT10 - HEAVY DUTY



<b>TYPE</b>	CT10 for standard INP 80-100
Carrying Capacity	Max. 150 kg
Travel speed max.	160m/min
Material	Galvanized Steel
Temperature range	-30°C to +65°
Wheel Sets	Standard track INP and flat beam IPE Without or with horizontal & vertical guide roller
Wheels Quality	AISI 1050 + galvanized Without or with hardened 35-38 HRC

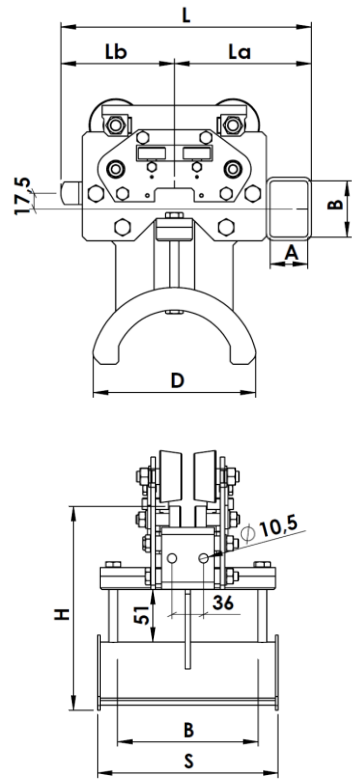
\* Contact us for different kind of length request

### CT10 – C (Carrier)



Type	Max. clamping width (B)	L mm	S mm	D mm	H mm	T mm	Weight kg	Order No
CT10-250-140-160	160	250	206	140	232	50	9	250101
CT10-250-140-210	210		256				9,5	250102
CT10-250-140-260	260		306				10	250103
CT10-250-170-160	160	206	170	10	250104			
CT10-250-170-210	210	256		10,5	250105			
CT10-250-170-260	260	306		11	250106			
CT10-300-190-160	160	300	206	190	260	11	300101	
CT10-300-190-210	210		256			11,5	300102	
CT10-300-190-260	260		306			12	300103	
CT10-300-220-160	160	206	220	12		300104		
CT10-300-220-210	210	256		12,5		300105		
CT10-300-220-260	260	306		13		300106		
CT10-350-240-160	160	350	206	240	320	13	350101	
CT10-350-240-210	210		256			13,5	350102	
CT10-350-240-260	260		306			14	350103	
CT10-350-270-160	160	206	270	14		350104		
CT10-350-270-210	210	256		14,5		350105		
CT10-350-270-260	260	306		15		350106		

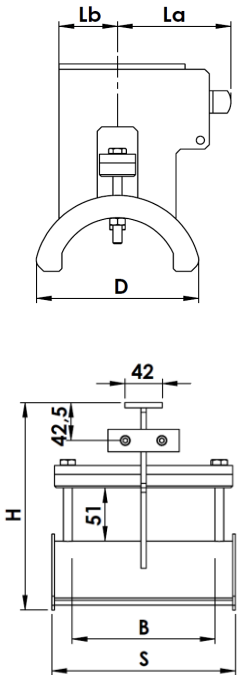
\*\* Contact us for different kind of length request



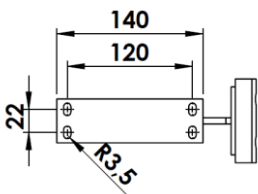
**CT10 – L (Lead)**

Type	B mm	L mm	La mm	Lb mm	AxB mm	D mm	S mm	H mm	Weight kg	Order No
CT10-250-140-160	160	280	152	128	42*62	140	206	240	9	250201
CT10-250-140-210	210						256		9,5	250202
CT10-250-140-260	260						306		10	250203
CT10-250-170-160	160					206	10		250204	
CT10-250-170-210	210					256	10,5		250205	
CT10-250-170-260	260					306	11		250206	
CT10-300-190-160	160	330	177	153		190	206	240 +20	11	300201
CT10-300-190-210	210						256		11,5	300202
CT10-300-190-260	260						306		12	300203
CT10-300-220-160	160					206	12		300204	
CT10-300-220-210	210					256	12,5		300205	
CT10-300-220-260	260					306	13		300206	
CT10-350-240-160	160	380	202	178	240	206	240 +20	13	350201	
CT10-350-240-210	210					256		13,5	350202	
CT10-350-240-260	260					306		14	350203	
CT10-350-270-160	160				206	14		350204		
CT10-350-270-210	210				256	14,5		350205		
CT10-350-270-260	260				306	15		350206		

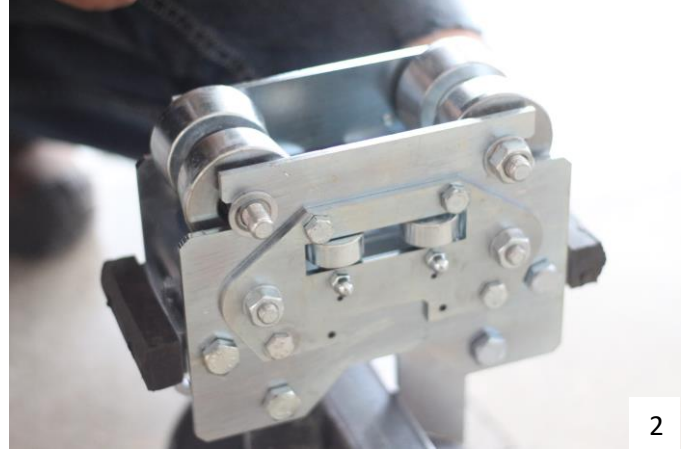
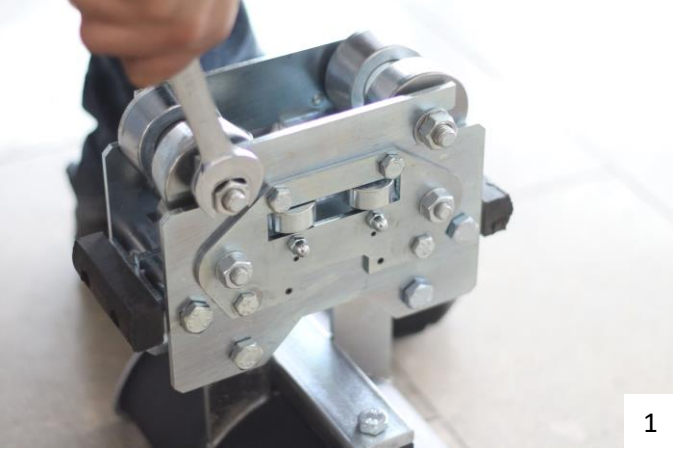
**CT10 – T (Track)**



Type	B mm	La mm	Lb mm	D mm	S mm	H mm	Weight kg	Order No
CT10-250-140-160	160	152	128	140	206	240	9	250301
CT10-250-140-210	210				256		9,5	250302
CT10-250-140-260	260				306		10	250303
CT10-250-170-160	160			206	10		250304	
CT10-250-170-210	210			256	10,5		250305	
CT10-250-170-260	260			306	11		250306	
CT10-300-190-160	160	177	153	190	206	240 +20	11	300301
CT10-300-190-210	210				256		11,5	300302
CT10-300-190-260	260				306		12	300303
CT10-300-220-160	160			206	12		300304	
CT10-300-220-210	210			256	12,5		300305	
CT10-300-220-260	260			306	13		300306	
CT10-350-240-160	160	202	178	240	206	240 +20	13	350301
CT10-350-240-210	210				256		13,5	350302
CT10-350-240-260	260				306		14	350303
CT10-350-270-160	160			206	14		350304	
CT10-350-270-210	210			256	14,5		350305	
CT10-350-270-260	260			306	15		350306	



## BENEFITS OF CT10



**The design of the product makes it **EASY** to change main wheels on the festoon.**

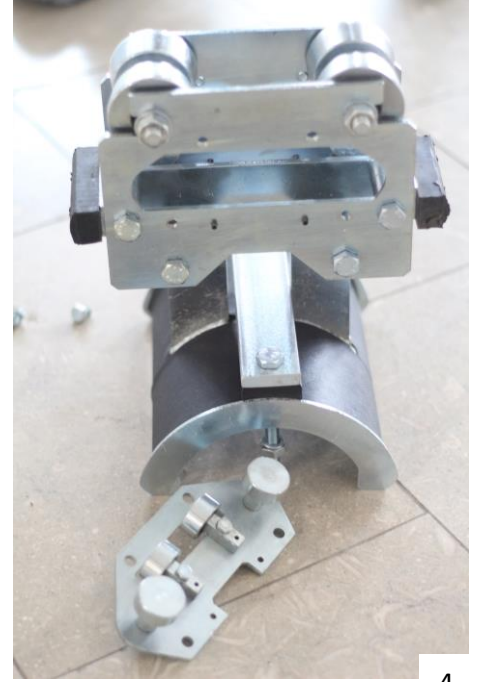
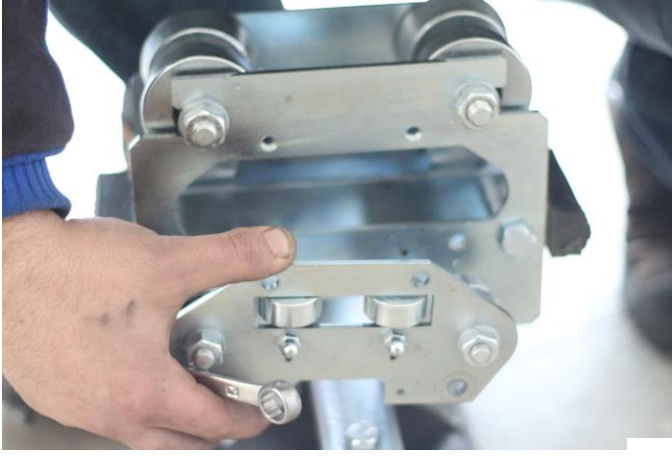
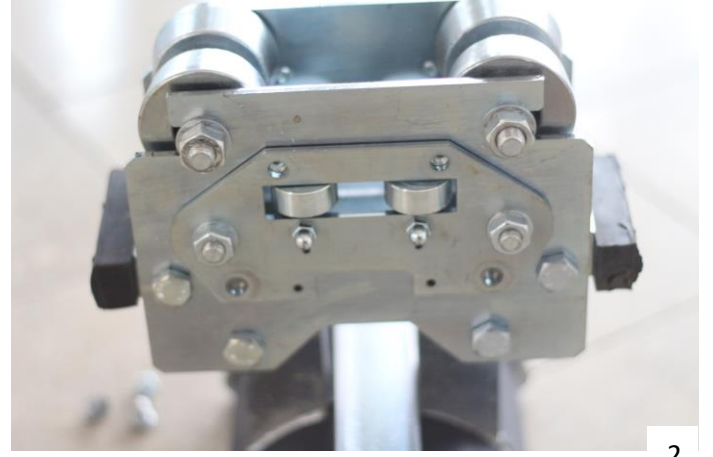
*Feston üzerinde kolay ana teker deęiřecek řekilde dizayn edilmiřtir.*

**It's not necessary to disassemble all trolleys.**

*Tüm arabaları demonte etmek gerekmez.*

**It reduces maintenance time!**

*Bakım sürelerini azaltır !*



**The design of the product makes it **EASY** to change guide wheels on the festoon.**

*Feston üzerinde kolay kılavuz teker deęiřecek řekilde dizayn edilmiřtir.*

**It's not necessary to disassemble the body.**

*Gövdeyi demonte etmek gerekmez.*

**All guide wheels are located in the same body for easier and faster maintenance.**

*Daha kolay ve hızlı bakım için tüm kılavuz tekerler tek gövdededir.*

**The guide wheel body can be supplied by our company if it's needed.**

*İhtiyaç durumunda kılavuz teker gövdesini tarafımızdan tedarik edebilirsiniz.*

